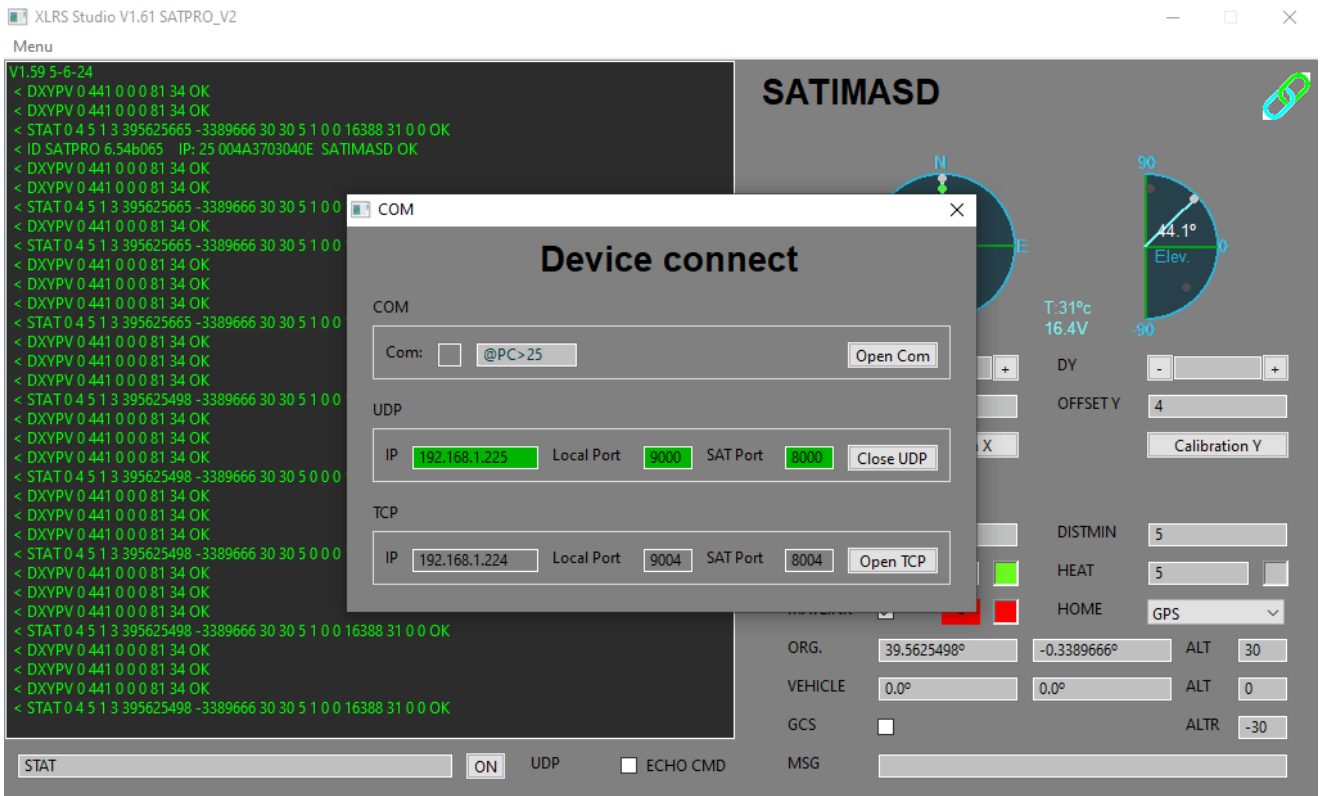


SATPRO_Soft_intro

Introduction to XLRS_SATPRO Software



Introduction

The SATPRO V2 is controlled and configured through the XLRS_SATPRO software for Windows. This program, while having a simple appearance, is comprehensive, powerful, and efficient.

The software allows users to test the functionalities of the

SATPRO V2 within minutes and also supports some functions of the SATPRO V1.

The SATPRO V2 offers a wide range of commands, all text-based, with responses also in text, which can be easily viewed in the console.

Key Features:

- **Direct Commands:** It is possible to stop the software's command loop to manually enter commands and observe the responses in real-time on the console.
- **Real-Time Updates:** The responses to the commands will update the various elements on the main screen and other forms.
- **Main Screen:**
 - **Text Console:** Displays the commands and their responses.
 - **Position Graph:** Shows the current position of the Tracker, sensors, and other relevant data.
 - **Buttons and Texts:** Allow users to perform tests and configure parts of the SATPRO.
 - **Alarms and Notifications:** Alert messages and relevant notifications will appear automatically.
- **Access Menu:** From the menu, users can access specific forms to:
 - View local GPS data.
 - View vehicle GPS data.
 - Configure communications.
 - Other important configurations and data.

With the XLRs_SATPRO software, users can manage and optimize the performance of the SATPRO V2 intuitively and efficiently, ensuring safe and precise operation of their antenna tracking systems.